



**OVER 40  
YEARS IN  
TANK  
MANUFACTURING**

**American  
Structures, Inc.**  
Menomonie, WI  
**715-235-4225**  
ameristruc.com

**June / July 2019 Newsletter**

**Volume 7 Issue 6  
Page 1 of 2**

## Characteristics of Stainless Steel.

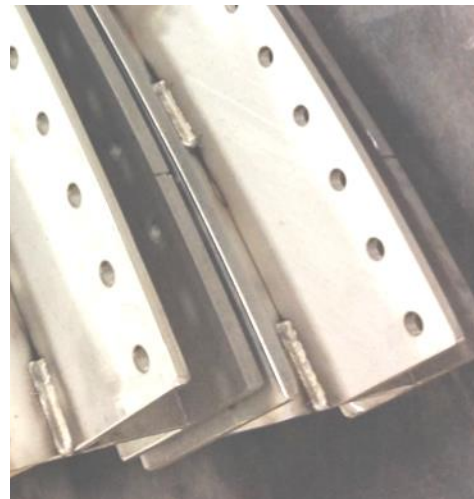
Austenitic stainless steel is the most common, making up about two-thirds of all stainless steel production. In metallurgy, stainless steel is a steel alloy containing a minimum of 10.5% chromium and 1.2% carbon content by mass. With this level of chromium and additional levels of molybdenum, stainless steel increases its corrosive resistant properties. There are numerous grades of stainless steel. Duplex stainless steel is preferred for its high yield strength and corrosion resistance.

Other characteristics are:

- corrosion resistant
- low maintenance
- Easily sterilized or steamed
- No surface coatings needed
- Stain resistant
- ideal for storage tanks
- familiar metal appearance
- Metal can be recycled

Stainless steels can be rolled into sheets, plates, bars, wire and tubing.

Source: [https://en.wikipedia.org/wiki/stainless\\_steel](https://en.wikipedia.org/wiki/stainless_steel); <http://www.ssina.com/overview/history.html>



The American Water Works Association (AWWA) Annual Conference & Exposition (ACE) was June 9—12. It was great to see 12,000 attendees at the ACE19 Show in Denver, CO. Our booth was one of 487 exhibiting companies and it was an honor to meet everyone who stopped by to visit with us.





**OVER 40  
YEARS IN  
TANK  
MANUFACTURING**

**American Structures, Inc.**  
 Menomonee, WI  
**715-235-4225**  
 ameristruc.com

Volume 7 Issue 6  
Page 2 of 2

### **Aquifer located under the ocean off the Northeast coast of U.S.**

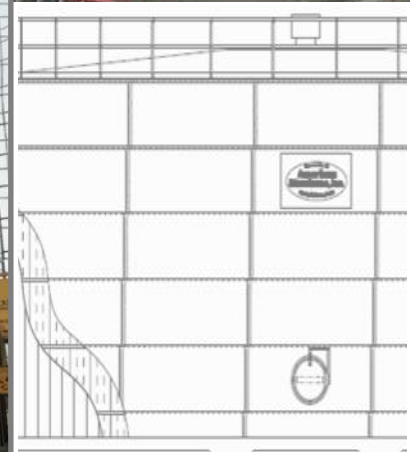
Below the Atlantic Ocean, there is a huge freshwater aquifer. It appears to be the largest of its kind. Scientists used electromagnetic waves to map the location of the freshwater aquifer beneath the ocean.

According to Kerry Key, a geophysicist, the water is not stagnant. The belief is that the water is fed by subterranean runoff from the land. The water is then pushed toward the sea by the rising and falling pressures of the tides.

<https://interestingengineering.com/huge-freshwater-aquifer>; <https://www.wateronline.com/doc/scientists-map-huge-undersea>

### **What's New?**

**Land O' Lakes—  
Pine Island, MN  
21.54' x 22.17'  
Wastewater Tank  
Insulation & Steel Cladding**



### **USDA Invests in Rural Water and Wastewater Infrastructure in 29 States**

In a Press Release on June 26, 2019— Acting Assistant to the Secretary for Rural Development Joel Baxley announced that the U.S. Department of Agriculture (USDA) is investing \$192 million in 71 projects located across 29 states to improve rural water infrastructure. The USDA Rural Development provides loans and grants to help expand economic opportunities and create jobs in rural areas.

<https://www.usda.gov/media/press-releases/2019/0626/usda-invests>

**American Structures, Inc.** Find our booth at these next events...

**Aug 6-9, 2019**  
 TN Business Conf & Expo TAUD.ORG  
 Gatlinburg, TN  
 Tennessee Association of Utility Districts  
 Vital for Tennessee's future

**Aug 26-27, 2019**  
 KY Conf. & Expo KRWA.ORG  
 Lexington, KY  
 Kentucky Rural Water